

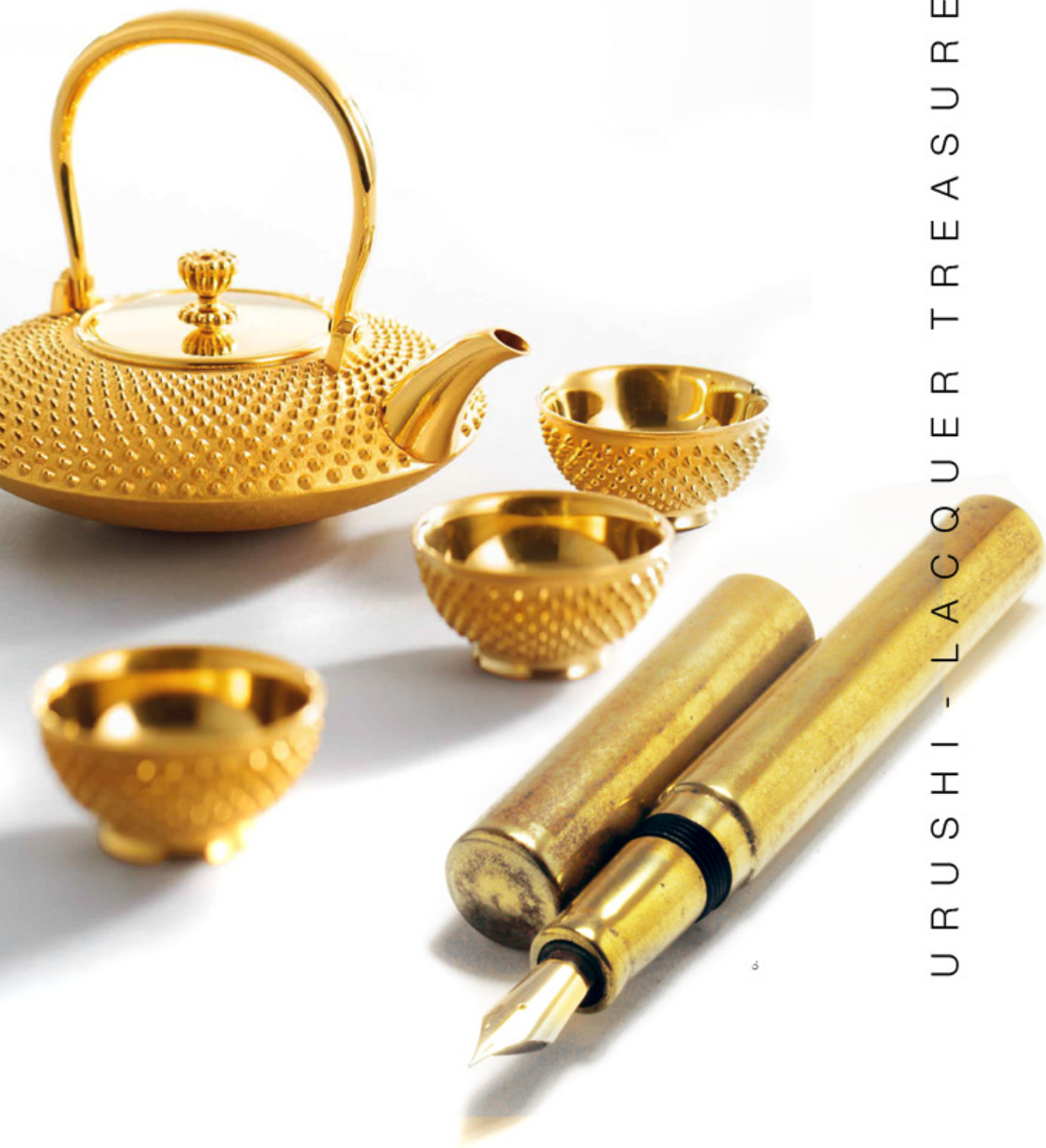


URUSHI - LACQUER TREASURES

# 99 URUSHI WORKS

by Urushi Artisan Martin Pauli 2009 - 2024

Private Collection of Experimental and Unique Pieces



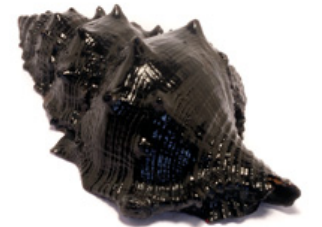
URUSHI - LACQUER TREASURES



The Catalogue presents 99 Urushi Works made by  
Urushi Artisan Martin Pauli between 2009 and 2024,  
all of them are considered Experimental Works and  
Unique Pieces, Part of his Private Collection  
All works are made with traditional Japanese materials  
in the traditional way but sometimes with a slight Swiss touch.

Manu Propria Ateliers  
Pulverstrasse 8  
3036 Ittigen-Bern  
Switzerland  
Phone +41 31 311 0011

[www.manupropria-peenss.ch](http://www.manupropria-peenss.ch)  
[www.angularmomentum.com](http://www.angularmomentum.com)



**Netsuke**  
In the shape of a Conch, 60 mm, Kokusô, dry lacquer, Urushi



**Paper Weight**

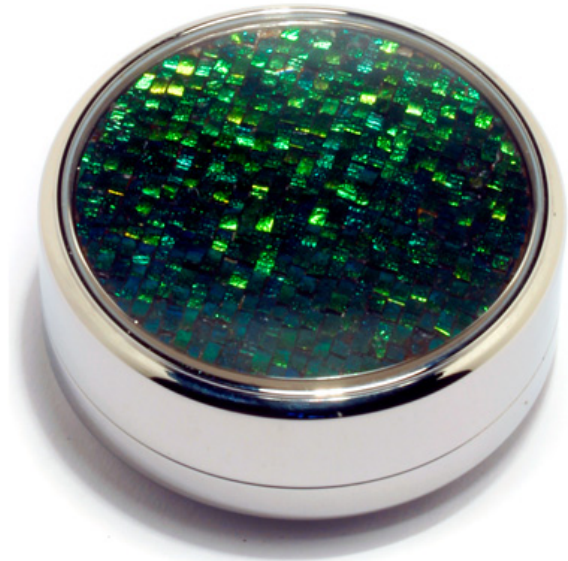
A Paper weight with a grip piece in the shape of a Conch shell built from "Kokusô" Dry Lacquer, Momiji Maki-e in various color metal powders, 25 cm, Bamboo, Urushi, Kokusô, Dry Lacquer



Sake Cup  
Sake Cups imitating "Kinsokumitateai" hand forged iron, Paper Marche, Urushi, Iron Powder



Water Dropper  
Water Dropper in the shape and size of a chicken egg, Egg Shell, Urushi, Iron Powder



Pill Box  
Stainless steel box, 50 mm, Tamamushi Nuri, Sapphire Glass, Jewel Beetle Wings



Iron Koro  
The lid of an iron koro 12 x 10 cm, Urushi, Kokusô, Dry Lacquer, iron powder





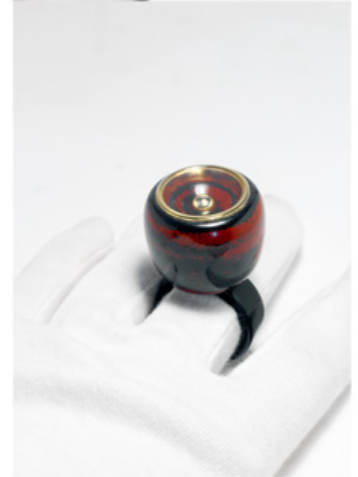
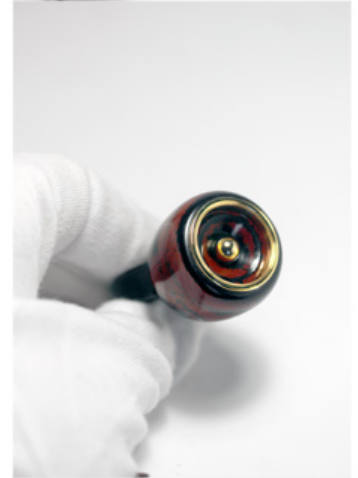
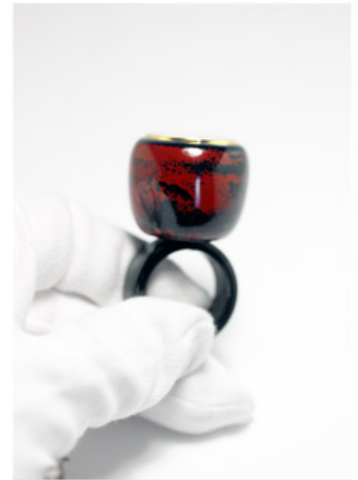
Finger Ring  
Negoro Bowl with moving pearls 40 mm, Urushi, Ebonite, Pearls, Sapphire Glass

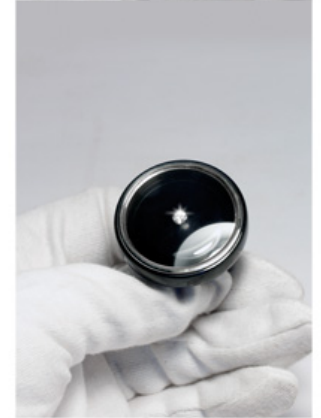


**Tsuba**  
A Wakizashi Iron Tsuba 60 mm, Urushi, Iron Powder, Gold



Finger Ring  
Negoro Bowl with a Gold Ball 20 x 20 mm, Urushi, Ebonite, Gold, Sapphire glass





**Finger Ring**  
Bowl lacquered with Shôen Neri a Diamond in the center, 40 mm  
Urushi, Ebonite, Diamond, Sapphire Glas



**Desk Fountain Pen "Raden to Kai"**

A Fountain Pen lacquered with a "Tame Raden/Kaai Nuri" Numerous layers of transparent "Sukrome" urushi is applied over a Abalone "Raden" and sea shell "Kai"pieces. A roll stopper in the shape of a sea snail made in high-relief "takamaki-e" Urushi and metal powders 20 x 200 mm  
Urushi, Ebonite, Gold, Raden, Kai



Incense Box  
A Incense box and lid, 10 cm, Urushi, Wood



**Tea Scoop**

A scoop for tea leaves in the shape of a piece of tree bark 14 cm  
Urushi, Kokusô Dry Lacquer

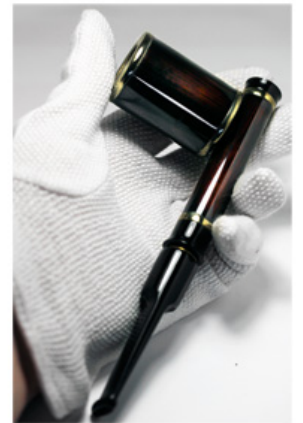
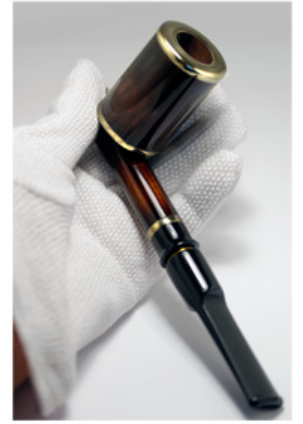


#### Tobacco Pipe

Bowl and stem Bamboo, Inner bowl Briar wood

The golden parts "Kinsokumitateai" made from Urushi and Brass Powder imitating solid Brass

Urushi, Briar, Bamboo, Brass Powder







### Incenser

A Incenser in the shape of an egg packaging  
simulating being cast iron "Kinsokumitateai", 20 cm  
Urushi, Papier Marche, Iron Powder



**Finger Ring "Negoro Chinkin"**

Black "kuro ishime-ji" stone ground. A black "Shōen Neri" Urushi plate engraved with a Guilloche Pattern filled with red "Shū Neri" Urushi, Ebonite, Sapphire Glass



**Sake Cup "Kintsugi"**

Chicken Egg shell converted to a sake cup, coated with numerous layers of urushi and iron powder imitating cast iron, Kintsugi repairs  
Urushi, Egg shell, Iron Powder, Gold Powder



**Wrist Watch "Bird"**

The rotating hour disk featuring a red and black scene of a bird over a troubled, muddy pond

The beak of the bird functions as the hour hand, Minute hand

Urushi, Stainless Steel, Sapphire Crystal, Mechanical Movement



Finger Ring  
Steel Rings with Mother of Pearl "Aogai" Urushi, Steel, Abalone, Mother of Pearl, Gold

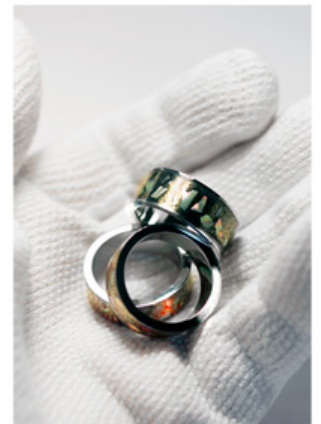
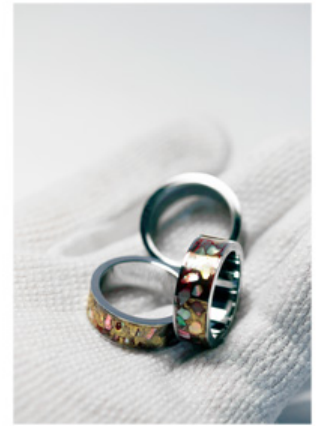


**Sake Cup "Tamago"**

Chicken Egg shell converted to a sake cup, outside coated with numerous layers of urushi and brass powder, the inside "fundame" gold ground. Urushi, Egg Shell, Brass Powder, Gold Leaf

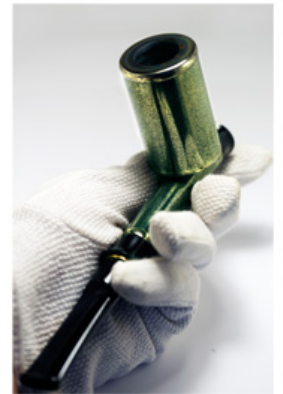


Tsuba  
Copper Tsuba for a Katana 95 x 85 mm  
Urushi, Copper Powder



Finger Ring  
Steel Rings with Mother of Pearl "Raden" Urushi, Steel, Mother of Pearl, Gold





#### Tobacco Pipe

Bowl and stem Bamboo, Inner core Briar Wood, Lacquered with "Midori Kin Nuri" Green Gold Lacquer, Golden Parts "Kinsokumitateai" Urushi, Bamboo, Briar, Brass Powder



#### Water Dropper

A small water dropper made from a dry lemon, numerous coated with urushi and iron powder, "Kinsokumitateai" imitating being cast iron, 6 cm, Urushi, a Lemon, Iron Powder



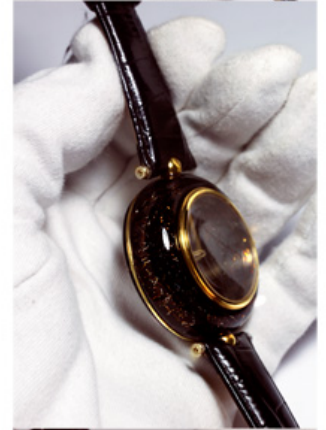
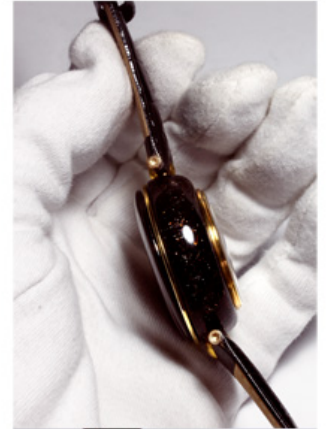
**Fountain Pen "Tsuba"**

A Fountain Pen with a dark brown "Ishime.ji" stone laquer, featuring an Iron Tsuba and a sword tang in high-relief "takamakie" "kinsokumitateai" simulating forged steel, 19 x 200 mm  
Urushi, Ebonite, Gold, Iron and Brass Powder



**Finger Ring "Museo"**

A finger ring with a "show case" featuring a flying bird made in "takamai-e" high-relief on stone ground  
Urushi, Steel, Sapphire Glass



**Wrist Watch**  
A large wrist watch made from Ebonite with sapphire crystal  
The case and dial "Kinhar Nuri" gold needle lacquer 45 mm  
Urushi, Ebonite, Brass, Gold, historical mechanical movement



**Desk Fountain Pen "Raden Sentoku"**

The Raden Sentoku ground is achieved by numerous layers of transparent urushi inlaid with raden pieces and saturated with very fine "sentoku" brass powder. The roll stopper in the shape of a sea snail made in high relief "takamaki-e" from urushi and brass powder, 20 x 200 mm  
Urushi, Ebonite, Gold, Raden Brass Powder



**Suiseki**

Suiseki, - the Japanese Art of Stone Appreciation

A stone made from Paper Marche, the bottom lacquered with "Negoro Nuri". The wooden stand "daiza" also made from Paper Marche and Urushi lacquer, Urushi, Paper Marche, Kokuso, Dry Lacquer



Incense Box  
A small Incense box and lid, decorated with a Negoro snail shell 14 cm  
Urushi, Wood, Metal Powder





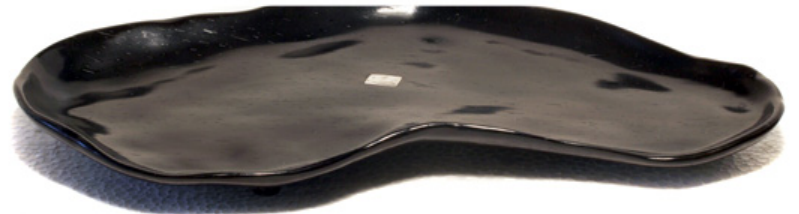
#### Tobacco Pipe

Bowl and Stem Briar Wood. Outside treated with a technique called "shōsugiban"  
Burned by fire and sealed with Urushi lacquer. two simulated crack repairs  
Urushi, Briar Wood, Brass



#### Iron Pocket Watch

Iron rusted and treated with urushi at high temperature "Yakitsuke", the same treatment used on cast iron tea kettle dial urushi imitating ray skin



**Suiseki Ibigawa Tōyama Murasaki Ryūgan Ishi mei "San Setsu"**

Suiseki, - the Japanese Art of Stone Appreciation  
 A Suiseki Stone and its Rose wood stand "daiza" completely made from Paper Marche and Urushi  
 This is an exact copy of an existing "Yurai Seki" historically important stone, When Baron Tokugawa added this stone to his collection over 100 years ago, he noted: "kono ishi wa mangetsu hansha shite imas" "This stone reflects the full moon". Ibigawa = Ibi River, Tōyama = distant view, Murasaki = Purple Color, Ryūgan = Dragon Eyes refers to the white spots, San Setsu = Lingering Snow  
 Urushi, Paper Marche, Kokuso, Dry Lacquer



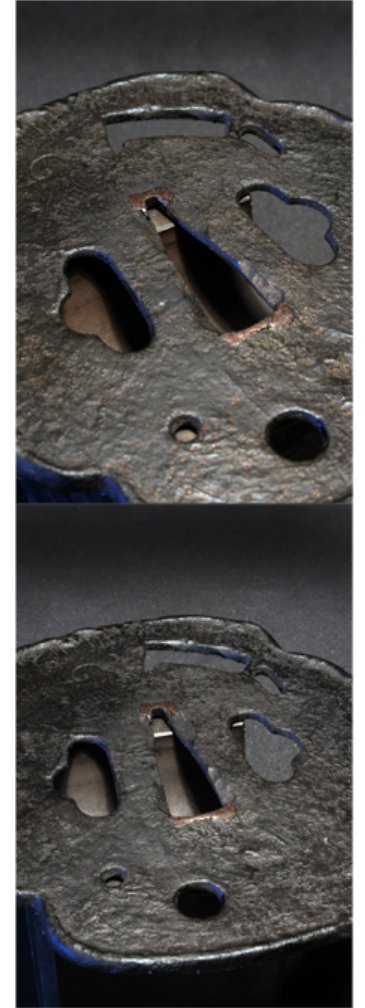
**Wrist Watch "Treasures of the Ocean"**

The dial featuring treasures of the ocean, showing high-relief shells built in high-relief "takamaki-e" from urushi and metal powders, laying on a black stone ground  
Urushi, Stainless Steel, Sapphire Crystal, Mechanical Movement



#### Hocho

A Japanese kitchen knife "Hocho". The blade made from Paper Marche and iron powder, the handle Ebonite with Negoro Nuri, Urushi, Paper Marche, Ebonite



**Tsuba**

A Katana Iron Tsuba 95 mm Urushi, Iron Powder, Copper Powder



#### Pocket Watch "Koi"

A wrist watch made from stainless steel with sapphire crystal The dial black urushi with "Clou der Paris"  
Guilloche engraving A Koi built in high-relief urushi Lacquer "takamaki-e" 42 mm, Urushi, stainless steel,  
historical mechanical movement



**Pocket Watch "Yamamaki-e"**

A pocket watch made from stainless steel with sapphire crystal The dial black urushi with "Clou der Paris" Guilloche engraving A bird built in high-relief "takamakie" The full moon an aperture for digital time display, à Souscription", 45 mm, Urushi, stainless steel, historical mechanical movement





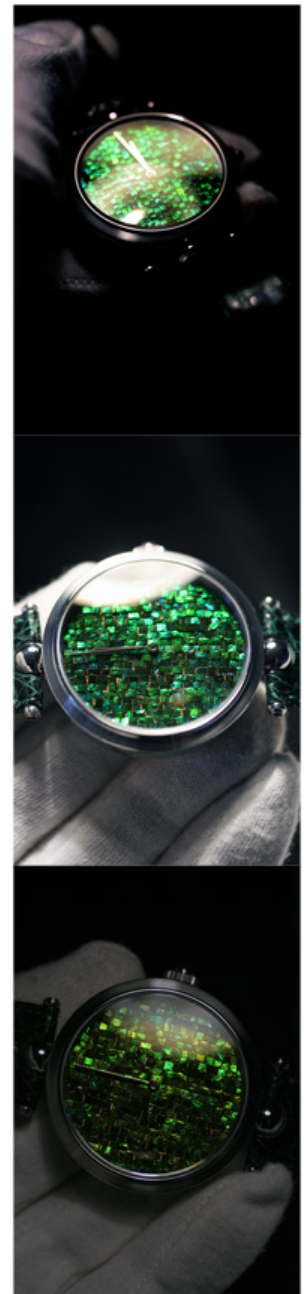
#### TableWatch

A table watch made from Ebonite with sapphire crystal The case and dial "Kinhar Nuri" gold needle lacquer 110 x55 mm  
Urushi, Ebonite, Brass, Gold, historical mechanical movement



#### Pocket Watch

A large pocket watch made from Ebonite with sapphire crystal  
The case "Negoro Nuri", the dial imitates a piece of an ink cake, 45 mm  
Urushi, Ebonite, Sapphire Glass, Brass, Gold, historical mechanical movement



**Wrist Watch "Tamamushi"**  
The dial featuring "Tamamushi" Jewel Beetle Wings 42 mm  
Urushi, Stainless Steel, Sapphire Crystal, Mechanical Movement



#### Wrist Watch "Three Feathers"

The dial featuring three feathers made in high-relief "takamaki-e", colored with leaves of red gold, yellow gold and platinum, mounted on a polished black "Roiro Nuri" dial 42 mm Urushi, Stainless Steel, Sapphire Crystal, Mechanical Movement



Ôhashi "Susutake"

A traveller's Chop stick set with its case sealed and toned with "fuki urushi" raw lacquer 23 cm  
Urushi, Susutake (smoked bamboo), Brass



**Wrist Watch "Aogai Migin"**

The dial featuring a universe of sparkling "Aogai Migin" Abalone grains sprinkled in black urushi lacquer 42 mm Urushi, Stainless Steel, Sapphire Crystal, Mechanical Movement



**Wrist Watch "Peltz"**

The dial featuring a surface simulating the fur of an animal, 42 mm  
Urushi, Stainless Steel, Sapphire Crystal, Mechanical Movement



Desk Pen Case "Take"  
Bamboo case and lid held together with magnets. "Fuki Urushi" and "Momiji Maki-e"  
Urushi, Stainless Steel, Sapphire Crystal, Mechanical Movement





#### Pocket Watch

A large pocket watch made from Ebonite with sapphire crystal  
The case and dial "Kinhar Nuri" gold needle lacquer, 55 mm  
Urushi, Ebonite, Brass, Gold, historical mechanical movement





**Wrist Watch "Guilloche"**

Dials in various colored urushi, engraved with "Clou der Paris" Guilloche pattern  
Urushi, Stainless Steel, Sapphire crystal, Mechanical Movement



#### Wrist Watch "Hikari Nuri"

A layer of black "roiro nuri" is laid over a layer of luminescent Oyster shell powder. The lacquer is polished until the luminous ground gets partially visible. Urushi, Stainless Steel, Sapphire crystal, Mechanical Movement.



**Wrist Watch "Ivory"**

The dial featuring an engraved and stained ivory plate, 42 mm  
Urushi, Stainless Steel, Sapphire Crystal, Mechanical Movement



**Wrist Watch "Midori Tame Negoro"**

The dial featuring a green "Midori Tame Negoro" Lacquer, a thin layer of black "roiro nuri" is laid over a green urushi ground and polished until the green ground partially appears. 42 mm  
Urushi, Stainless Steel, Sapphire crystal, Mechanical Movement



**Wrist Watch "Aka Tame Negoro"**

The dial featuring a Red Tame Nuri Lacquer. A layer of black urushi is applied over a polished "Shû Neri" ground and polished until the red lacquer partially appears, 42 mm Urushi, Stainless Steel, Sapphire Crystal, Mechanical Movement



Fountain Pen "Kazari"  
Dark brown "Ishime.ji" stone laquer, featuring a bird rendered in high-relief. 18 x 150 mm, Urushi, Ebonite, Gold



**Desk Fountain Pen "Tame Same"**

A Fountain Pen lacquered with a "Tame Same Nuri" Numerous layers of transparent "Sukurome" urushi is applied over a Same, Galuchat Shagreen or Pearl Ray skin. 20 x 200 mm  
Urushi, Ebonite, Gold, Same Skin





**Desk Fountain Pen "Tame Raden"**

A Fountain Pen lacquered with a "TameTame Raden Nuri"

Numerous layers of transparent "Sukrome" urushi is applied over a "Kuro Raden Nuri",

Abalone shell pieces placed in black lacquer. 20 x 200 mm, Urushi, Ebonite, Gold, Abalone Shells, Mother of Pearl



**Fountain Pen "TameTame Raden"**

"TameTame Raden Nuri". Numerous layers of transparent "Sukrome" urushi is applied over a "Aka Raden Nuri", Abalone shell pieces placed in red "shū neri" lacquer. 20 x 145 mm  
Urushi, Ebonite, Gold, Abalone, Mother of Pearl



Fountain Pen "Kin Kumo"

Kin Kumo = Golden Clouds in various colors of sky, 16/18 x 150 mm  
Urushi, Ebonite, Bamboo, Brass, Gold



**Fountain Pen "Aogai Migin"**

Bamboo lacquered with transparent "Sukrome Urushi" sprinkled with finest Abalone granulate, 22/17 x 150 mm  
Urushi, Ebonite, Bamboo, Abalone, Gold



**Wrist Watch "Flock of Birds"**

The dial featuring a flock of birds appearing over a black stone ground.  
"Yamimaki-e" black on black lacquer, "takamaki-e" high-relief. 42 mm  
Urushi, Stainless Steel, Sapphire crystal, Mechanical Movement



**Fountain Pen "Fuki Urushi"**

The bamboo is lacquered with transparent "Sukurome Urushi", 22/17 x 150 mm  
The metal parts are "Kinsoku Mitateai" made from urushi and brass powder imitaating solid brass  
Urushi, Ebonite, Bamboo, Gold, Brass Powder



#### Folding Knife

Stainless steel folding knife. The plates "Seigaiha Nuri" wave pattern lacquer with a "takamaki-e" high-relief Koi



**Fountain Pen "Toruseki"**

The pen is lacquered with an experimental lacquer that uses small pieces of crushed Malachite "toruseki", 20 x 200 mm  
Urushi, Ebonite, Gold, Malachite







Fountain Pen "Kage"  
"Kage" means shadow or silhouette. Images of animals insects and other are cut or engraved into the bamboo, then lacquered with "shōen neri" black urushi and ground free Urushi, Ebonite, Bamboo



**Fountain Pen "Mokumegane"**

Mokumegane is a metal fusion made from sheets of different metals to show interesting pattern and colors. This lacquer is made similarly by applying different layers of urushi and metal powders. 15/17 x 150 mm  
Urushi, Ebonite, Brass, Gold, Copper Powders



#### Fountain Pen "Brocade"

Many pattern are brushed with urushi and sprinkled with all kind of color powders from metal, mother of pearl and dry lacquer followed by transparent "sukurome" urushi to create a brocade-like look. The golden parts "kinsokumitateai" imitating solid brass, 15/17 x 150 mm. Urushi, Ebonite, Brass, Gold, Metal Powders



**Fountain Pen "Tetsu Momiji Nuri"**

"Namahasuri Nuri" is the term for lacquers using tree leaves like stamps for producing pattern. On this pen "Momiji" Japanese maple leaves are brushed with urushi and pressed on the Ground then sprinkled with Metal powders. The "Tetsu" Iron Ground is achieved by transparent urushi and iron powder. 15/17 x 150 mm. Urushi, Ebonite, Brass, Gold, Metal Powders

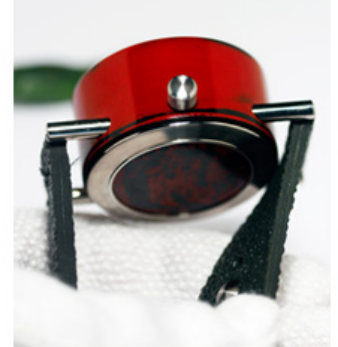


**Fountain Pen "Namban Kawari Nuri"**

Transparent "Sukurome" Urushi is applied over rings made from urushi and different colors, dry lacquer and metal powders, 15/17 x 150 mm. Urushi, Ebonite, Brass, Gold, Various Powders



Negoro Time Box  
Ebonite case, steel corns and back, Negoro Nuri, Mother of Pearl dial  
Mechanical movement





**Fountain Pen "Aware"**

Bamboo pieces are selected and sealed with "ki urushi" Raw Lacquer inside and outside

Numerous coats of transparent "Sukuromu" urushi follow. The "Tetsukugi" Clip forged from an Iron Nail, "Yakitsuke" finish  
Urushi, Ebonite, Bamboo, Iron, Gold



#### Fountain Pen

Pattern are brushed on the ground and saturated with various colors of powders

Numerous coats of transparent "Sukromu" urushi followed. Urushi, Ebonite, Brass, Gold





Desk Pen  
Two Bamboo pieces connected with a piece of Ebonite. Urushi, Ebonite, Bamboo, Iron Powder



**Wrist Watch "Moku"**

The dial featuring the surface of a piece of wood 42 mm,  
Urushi, Stainless Steel, Sapphire Crystal, Mechanical Movement



#### Desk Fountain Pen

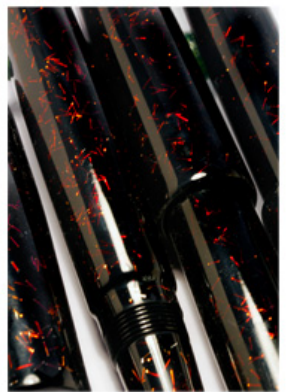
Large piece of Bamboo, decorated with various snails and shells built in high relief "takamaki-e" with urushi and various metal powders, 200 mm. Urushi, Ebonite, Bamboo, Gold



Desk Fountain Pen "Negoro Dera"  
Carved Ebonite, lacquered with "Negoro Nuri", 200 mm. Urushi, Ebonite, Gold



Fountain Pen "Daisy Flowers"  
Daisy Flowers painted on a green gold ground "Midori Kin Nuri". Urushi, Ebonite, Gold



Fountain Pen "Kin Hari Nuri"  
Gold Needle Lacquer. Gold needles are drawn, cut and flattened and randomly applied on wet lacquer. Numerous layers of reansparent "Sukurome Nuri" follow Urushi, Ebonite, Gold



Fountain Pens "Negoro Take"  
Natural Bamboo, lacquered with "Negoro Nuri" Urushi, Bamboo, Ebonite, Gold



#### Fountain Pens "Mingei"

The Beauty of Everyday Things. Following the Mingei philosophy, this Collection features one-of-a-kind Objects made from rural materials Urushi, Bamboo, Ebonite, Brass, Silver and Gold. Each Object is a true Unique Piece made by an "unknown" craftsman





Fountain Pen "Kokuso"

Bamboo core modeled with Dry Lacquer "Kokusô", end pieces "Shôen Neri" polished. Urushi, Ebonite, Kokusô



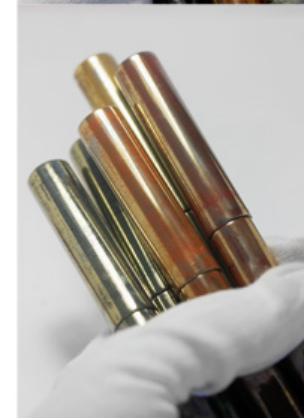
Fountain Pen Cases  
Papier Marche Pen Cases, lacquered with "Negoro Nuri" The solid golden parts "Kinsokumitateai"  
built from urushi and brass powder Urushi, Paper Marche, Brass Powder



Fountain Pen and Case "Daisy Flowers"  
Daisy Flowers painted on a "Negoro Nuri" base 180 mm. Urushi, Ebonite, Gold



Fountain Pens "Ebony & Rosewood"  
Ebonite bodies lacquered and engraved imitating precious woods. Urushi, Ebonite, Gold



Fountain Pens "Three Colors of Gold"  
Various colors of gold achieved by sprinkling "Sentoku" brass powder into colored urushi  
Urushi, Ebonite, Metal Powder, Gold



Tobacco Pipes "Kokuso"  
Briar core modeled with Dry Lacquer "Kokusô" the end pieces polished "Shôen Neri"  
Urushi, Briar Wood, Kokusô



Chawan "Katamigawari"  
Tenmoku style Ceramic Tea Bowl lacquered with "Negoro Nuri" "Yakitsuke"  
"Katamigawari" means half and half. Urushi, Ceramic



**Wrist Watch "TameTame Raden"**

The dial featuring a TameTame Raden Lacquer. Numerous layers of transparent Lacquer "Sukurome" over "Raden Nuri" Abalone lacquer 42 mm, Urushi, Stainless Steel, Sapphire Crystal, Mechanical Movement





Chawan  
Ceramic Tea Bowl lacquered with Urushi "Yakitsuke" Urushi, Ceramic



Letter Opener "Awl Tool"

Letter opener in the shape of a Awl Tool, the handle lacquered with "Negoro Nuri",  
The blades wooden core with "Kinsokumitateai" lacquer imitating solid Brass or Iron  
Urushi, Ebonite, Brass or Iron Powder



Fruit Knife  
Fruit Knife with its matching Sheeth. Urushi, Ebonite, Stainless steel

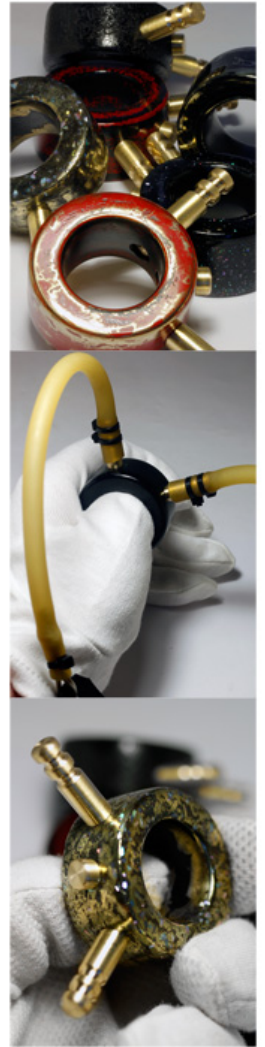


Letter Opener "Pen"  
Letter opener in the shape of a pen "Negoro Nuri", stainless steel blade  
Urushi, Ebonite, Stainless steel



Letter Opener "Dibble"

Dibble shaped Ebonite Body lacquered with "Negoro Nuri" over a "Kinsokumitateai" ground imitating iron  
Urushi, Ebonite, Iron Powder



**Thumb Sling Shot**  
Ebonite Thumb Rings with two screwable brass arms for mounting rubber slings. Urushi, Ebonite, Brass



**Finger Ring "Fuji San"**

Ebonite with black "kuro ishime-ji" stone lacquer. Fuji San on a polished "Tame Negoro" plate  
Urushi, Ebonite, Gold, Sapphire Glass



#### Finger Ring

Black "kuro ishime-ji" stone ground. A bird built in high-relief "takamaki-e" with urushi and dry lacquer powder over a ground showing a muddy pond. Urushi, Ebonite, Sapphire Glass





**Finger Ring "Chadô"**

Black "Ishime-ji" stone lacquer ground. A bird built in high-relief "takamaki-e" with urushi and finest "Chadô Fun" Copper powder over a "Chadô Nuri" brown rusty stone surface  
Urushi, Ebonite, Sapphire Glass, Copper Powder



#### Tobacco Pipe "Futaaki"

Futaaki bowl with briar wood center bowl, Ebonite stem "shōen neri" "Futaaki" is a piece of bamboo used as a stand for tea kettle lid during tea ceremony. Urushi, Ebonite, Bamboo

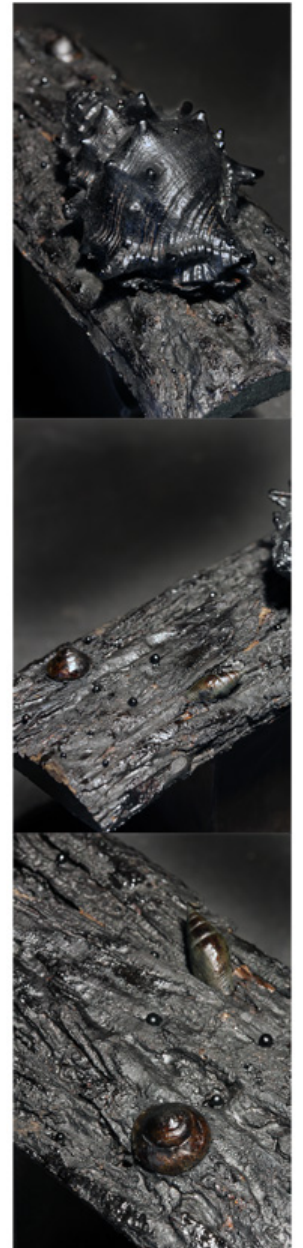


**Fountain Pens "Iro Fubuki"**

"Rankaku Nuri" is the term for Urushi with Egg Shell. This version is called "Fubuki" or Snow Storm Egg Shell granulate is sprinkled in various colors of Urushi



Chaire  
Paper Marche, "Kinsokumitateai" imitating cast iron, Ebonite Lid. Urushi, Paper Marche, Ebonite, Iron Powder



Paper Weight "Conch"

A Conch on a piece of wood, completely made from Dry Lacquer "Kokusô"  
Urushi, Kokusô, Metal Powders



Sling Shot "Take"  
Spaltet Bamboo lacquered with "Kuro Ishime-ji" and "Sukrome Urushi"  
The golden parts "Kinsokumitateai" imitating solid brass. Urushi, Bamboo, Brass Powder

### Fountain Pen "Iro Ishime-ji"

In Japanese Culture, Art & Craft, stone surfaces play an important role. Highly appreciated "Akaishi" Red and Yellow stones from Sado Island, "Aoishi" green "Kamuikotan" stones found in Hokkaido, "Aoishi" Blue Stones found in Iyo, Awa, Chichibu Region and finally highly appreciated the jet-black "Maguro Ishi" from the "Kamogawa" KamoRiver in Kyoto. Urushi, Ebonite, Dry Laquer, Gold





Fountain Pen "Raden Negoro"  
"Raden" Mother of Pearl pieces inlaid in "Negoro Nuri" Urushi, Ebonite, Raden, Gold





Fountain Pen "Pink Aster"  
The Flower heads brushed on fine "kuro ishime-ji" black stone ground. Urushi, Ebonite, Gold



Fountain Pen "Ichigo Maki-e"  
"Ichigo" Strawberry leaf Maki-e on jet-black "Shōen Neri" Ground  
Urushi, Ebonite, Gold



Fountain Pens "Nouvelle Negoro"

Red on black lacquer is known as "Negoro Nuri"

The Nouvelle Negoro Collection features Negoro Lacquers not with Red but with soft colors

Zora Negoro" Sky Color, Momo Negoro Peach Color, Shiro Negoro White Color, Umi Negoro Green Color



Fountain Pen "Tame Momiji Maki-e"  
Transparent "Sukurome" Urushi is applied over golden Momiji leaves, 15/17 x 150 mm  
Urushi, Ebonite, Gold



#### Fountain Pen "Kikkumon Seki"

A type of stone that is unknown to us in the West and revered in Japan is the chrysanthemum stone, known in Japan as "Kikkaseki" or "Kikumonseki". (Kikka = chrysanthemum, seki = stones, mon = Pattern). The chrysanthemum is an important symbol in Japan, it represents autumn and is the emblem of the Imperial Family. Stones with three-dimensional, protruding flowers are rare and called Kikkaseki or "sabahana" Kikkaseki. Stones found in mountain streams which have been ground flat and polished by the forces of nature are called «Kikkumon» Chrysanthemum Pattern Stones 15/17 x 150 mm  
Urushi, Ebonite, Gold