

# ART *Meets* ART

THE ART OF WATCH MAKING & THE ART OF URUSHI



MANVPROPRIA

FOUNTAIN PENS MADE IN SWITZERLAND

*Angular Momentum  
of Switzerland*

URUSHI - LACQUER TREASURES

# ART Meets ART

THE ART OF WATCH MAKING & THE ART OF URUSHI

## A Timeless Collaboration

Angular Momentum and Manu Propria Pens present a unique fusion of craftsmanship—the art of watchmaking meets the art of urushi lacquer. This exclusive collaboration brings together two exceptional crafts, blending intricate mechanical precision with the beauty of hand-applied, traditional Japanese lacquer artistry.

Together, they create a collection of 7 contemplating Timepieces where every detail tells a story of meticulous craftsmanship, heritage, and elegance.

A watch is more than a measure of time; it is a reminder to contemplate how we live within it. While we track time, we experience it with our senses and our thoughts, often rushing past the moments that define us. These finely crafted watches invite us to pause, reflect, and appreciate the art of time.

7 Contemplative Watches for sale



## **Birds & Pearls**

I have designed a small collection of contemplative timepieces with urushi lacquer works on the Hour discs replacing the traditional dial. The urushi work on each of the disks was created in a painstaking process that took months to complete. The enchanting theme of the collection is birds, pearls and the moon. There are no hour and minute hands to indicate the precise time, but a revolving hour disk with a white pearl that serves as the hour pointer. In keeping with the concept of contemplation, there is also no minute hand, which in turn allows for an extraordinary high relief works of birds arranged on the disc.

Find more Information [HERE](#)

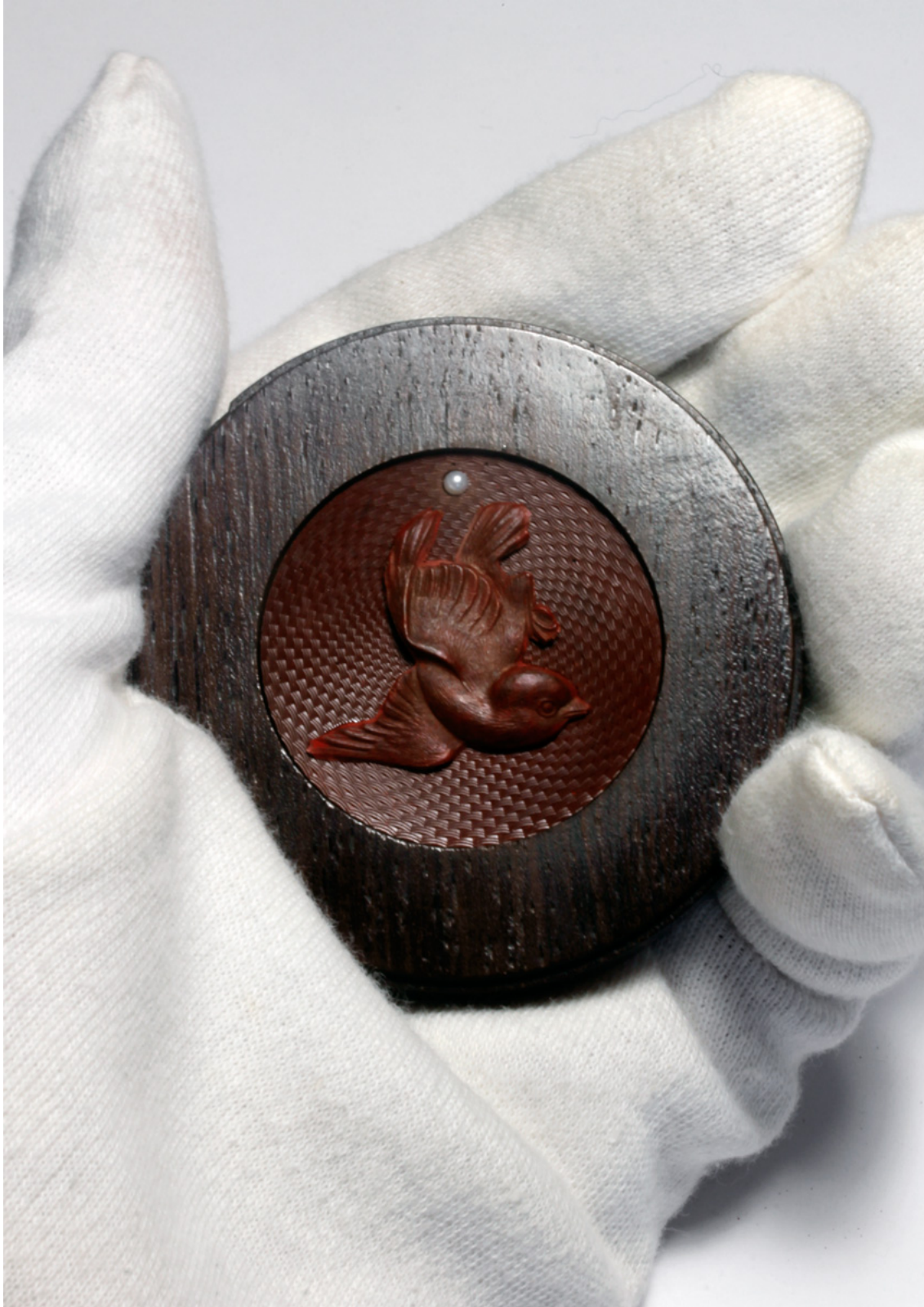
**Watches and Urushi Works completely made in Switzerland by Martin Pauli**

Angular Momentum & Manu Propria

Pulverstrasse 8, 3063 Ittigen-Bern, Switzerland

[www.angularmomentum.com](http://www.angularmomentum.com) – [www.manupropria-pens.ch](http://www.manupropria-pens.ch)





### **CONTEMPLATION #1 – Cuckoo and the Full Moon in Autumn**

42 mm stainless steel case with single curved sapphire crystal, self-winding movement  
The disk in dark red «ankōshoku» Urushi Lacquer, featuring a hand-made «Guilloché Clous de Paris» engraved pattern. The Cuckoo built in dark red «takamaki-e» high-relief Urushi with slightly polished surface Giving the picture a «hada ai» representing Autumn.

**Price USD 5'600.-**











### **CONTEMPLATION #2 - Cuckoo and the Full Moon**

42 mm stainless steel case with single curved sapphire crystal, self-winding movement

The revolving hour disk with Urushi Lacquer, showing a Cuckoo and the Full moon on «Beni Nagashi Ishime-Ji», Crimson color Stone Surface ground. The Cuckoo built in «takamaki-e» high-relief red and black Urushi Lacquer and finely polished to give the work a mysterious “yûgen no Hada Ai” appearance.

The moon represented by a pearl serves as the hour hand on the revolving hour disk

**Price USD 5'800.-**









### **CONTEMPLATION #3 - Cuckoo and the Full Moon**

42 mm stainless steel case with single curved sapphire crystal, self-winding movement  
The revolving hour disk with Urushi Lacquer, showing a Cuckoo and the Full moon on «Makuro Ishime-Ji»,  
Jet-black color Stone Surface ground. The Cuckoo built in «yamimaki takamaki-e» high-relief black in black  
Urushi and partially polished to give the work a mysterious “Yûgen no Hada Ai” appearance.

The moon represented by a pearl serves as the hour hand on the revolving hour disk

**Price USD 5'200.-**











#### **CONTEMPLATION #4 - Cuckoo and the Full Moon**

42 mm stainless steel case with single curved sapphire crystal, self-winding movement  
The revolving hour disk with Urushi Lacquer, showing a Cuckoo and the Full moon on «Chairo Ishime-Ji»,  
brown Stone Surface ground. The Cuckoo built in «takamaki-e» high-relief Urushi Lacquer and  
gilt with worn gold leaf to give the work a fine rusty “sabi no Hada Ai” appearance.  
The moon represented by a pearl serves as the hour hand on the revolving hour disk

**Price USD 5'200.-**









### **CONTEMPLATION #5 - Cuckoo and the Full Moon**

42 mm stainless steel case with single curved sapphire crystal, self-winding movement

The revolving hour disk with Urushi Lacquer, showing a Cuckoo and the Full moon on «Kuro Ishime-Ji»,

black Stone Surface ground. The Cuckoo built in «takamaki-e» high-relief Urushi

Lacquer and gilt with gold leaf to give the work a simple, austere “Wabi no Hada Ai” appearance.

The moon represented by a pearl serves as the hour hand on the revolving hour disk

**Price USD 5'200.-**











### **CONTEMPLATION #6 – Plover over Roaring Sea and the Full Moon**

42 mm stainless steel case with single curved sapphire crystal, self-winding movement

The revolving disk in Urushi Lacquer, showing a Plover and the Full moon on a ground depicting the roaring sea and spray shown by heavy “Chijimi” wrinkles and structures The Cuckoo built in black and red «takamaki-e» high-relief Urushi has a noble “Hada Ai” an ancient appearance.

The moon represented by a pearl serves as the hour hand on the revolving hour disk

**Price USD 5'200.-**









### **CONTEMPLATION #7 – Flock of birds**

42 mm stainless steel case with single curved sapphire crystal, hand-winding movement

The dial Urushi Lacquer, showing a flock of birds on a black “Nashiji urushi” pear skin ground  
The birds built black in black «yamimaki takamaki-e» high-relief Urushi representin elegant and refined “miyabi no hada ai” appearance

The moon represented by a pearl serves as the hour hand on the revolving hour disk

**Price USD 6'400.-**



